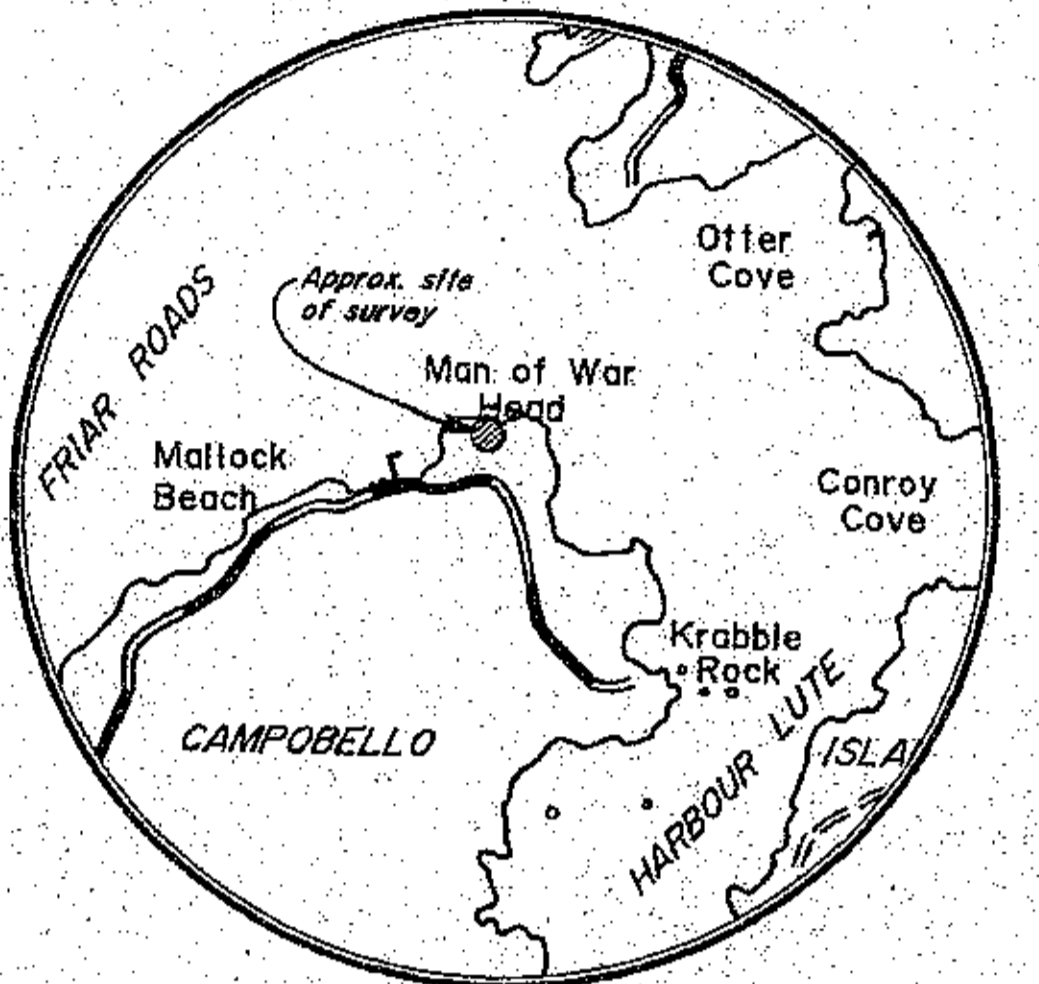
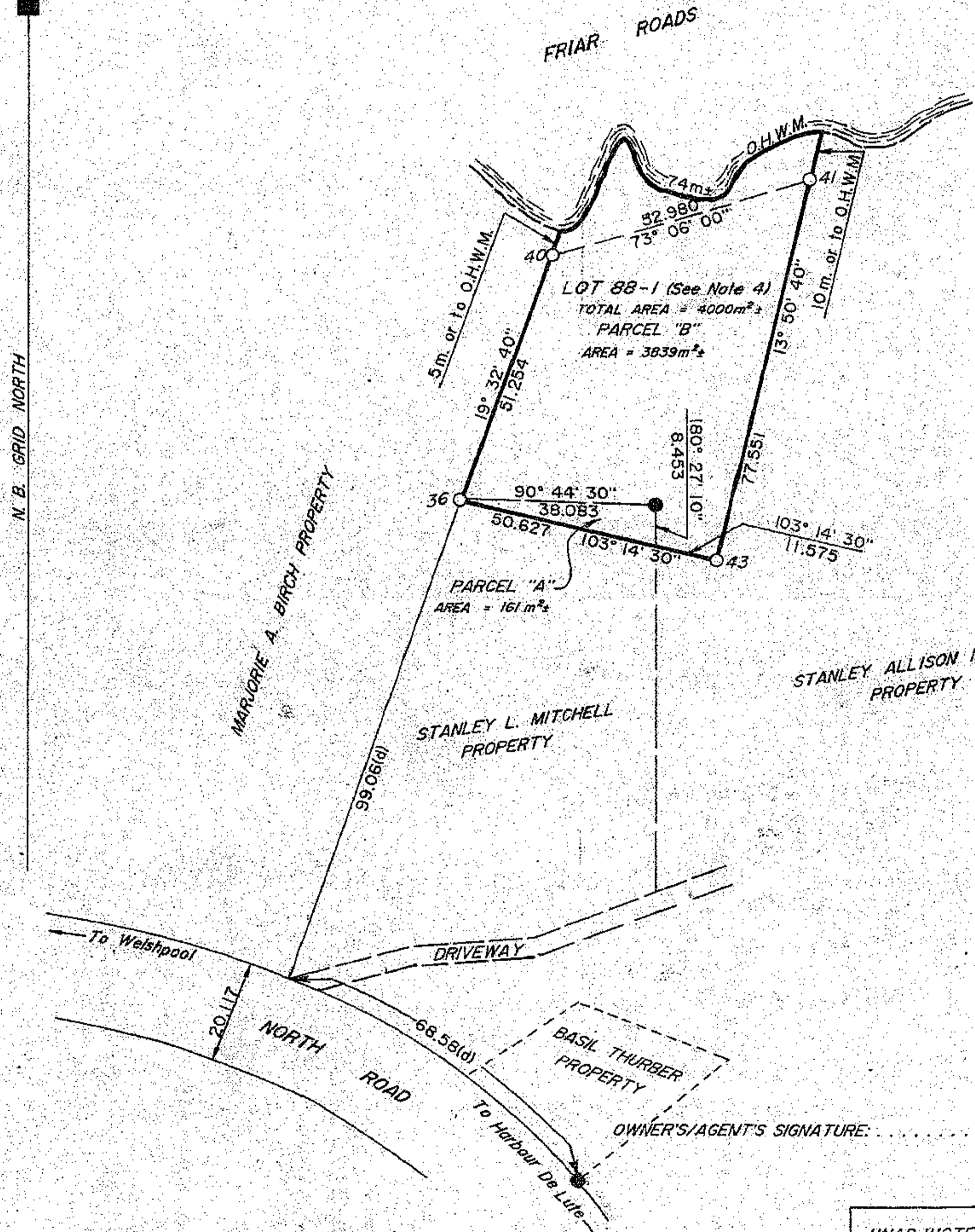


4338

- NOTES:
1. SURVEY RELATED TO N.B. GRID CO-ORDINATE MONUMENT NO. 16754, N 623 960.304 E 264 936.890 AND MON. NO. 16779, N 624 715.116 E 265 720.070.
 2. AZIMUTHS AND DISTANCES ARE ROUNDED OFF TO THE NEAREST 10" AND 0.001 METRE RESPECTIVELY.
 3. AZIMUTHS AND DISTANCES ARE CALCULATED UNLESS NOTED OTHERWISE.
 4. PARCEL "A" AND PARCEL "B" ARE TO BE CONSOLIDATED AS LOT 88-1.
 5. (d) MEANS DERIVED FROM A SOURCE OTHER THAN THE SURVEYOR'S MEASUREMENTS.



SCALE: 1:31680
CADASTRAL PLAN NO. 166

SUBDIVISION PLAN
STANLEY ALLISON MITCHELL
SUBDIVISION NORTH ROAD, PARISH OF CAMPOBELLO,
COUNTY OF CHARLOTTE, PROVINCE OF NEW BRUNSWICK.

REGISTRATION DATA: BK. 247 P. 81 NO. 86737
BK. 134 P. 232 NO. 41220

- LEGEND
- ROUND IRON ROD WITH AN ALUMINUM CAP PLACED ○
 - CALCULATED POINT ⊙
 - ORDINARY HIGH WATER MARK ———— O.H.W.M.
 - IRON BAR FOUND ●
 - BOUNDARIES DEALT WITH BY THIS PLAN BOUNDED THUS ————

I, WALTER E. MURPHY, NEW BRUNSWICK LAND SURVEYOR, CERTIFY THAT THE INFORMATION SHOWN ON THIS PLAN IS CORRECT TO THE BEST OF MY KNOWLEDGE AND BELIEF. SIGNED MAY 26, 1988

Walter E. Murphy N.B.L.S.

PROVINCE OF NEW BRUNSWICK
RECEIVED AND FILED
AUG 26 1988
DATE.....
TIME..... NUMBER.....
Walter E. Murphy
Registrar
CHARLOTTE COUNTY

UNADJUSTED CO-ORDINATES.
HORZ. GRID SCALE FACTOR 1.000111 APPLIED.

43	S.M. PLACED	265 434.145	624 071.466
41	S.M. PLACED	265 452.703	624 146.764
40	S.M. PLACED	265 402.011	624 131.364
36	S.M. PLACED	265 384.864	624 083.063
POINT	REMARKS	EASTING	NORTHING

PLAN NO. 0-1197

SCALE: 1:1000

JOB 8829

