

Scott Christopher, REALTOR®

Office: 207-947-7841
email: scott@sdchristopher.com
Web: www.sdchristopher.com

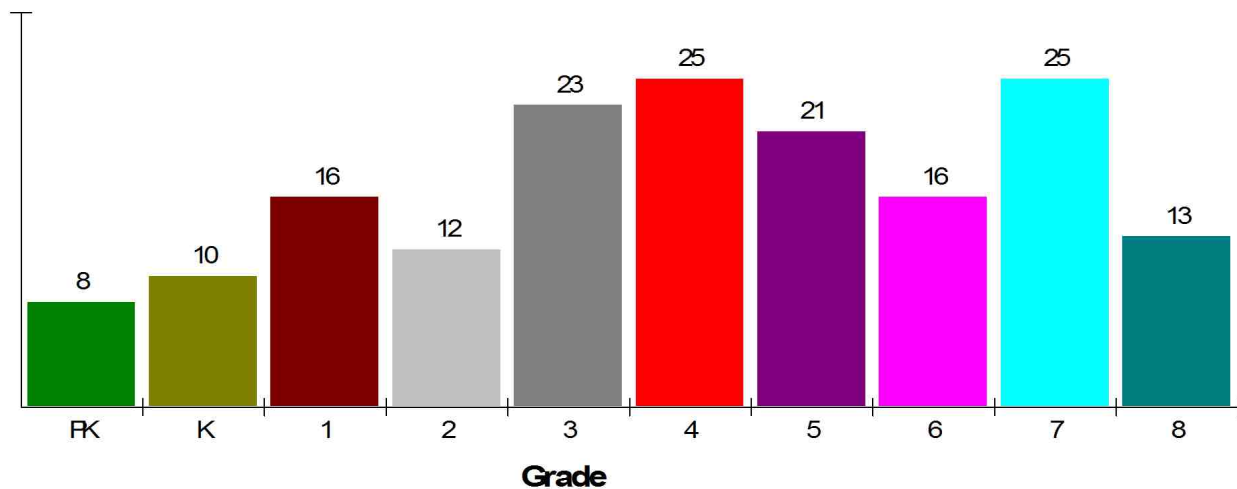
**General Facts
FOR PRINCETON SCHOOL DEPARTMENT**

PRINCETON SCHOOL DEPARTMENT
MUNIC BLDG PO BOX 580
BAILEYVILLE, ME 04694

Type:	(207)427-6913	Union Component Local District
Grade Range:		PK - 8
Schools:		1
Teacher:		15
Students:		177
Student/Teacher Ratio:		11.8 To 1
Student/Librarian Ratio:		Not Available
Secondary Student/Guidance Ratio:		Not Available

**Student Enrollment By Grade
FOR PRINCETON SCHOOL DEPARTMENT**

Total Enrollment = 169

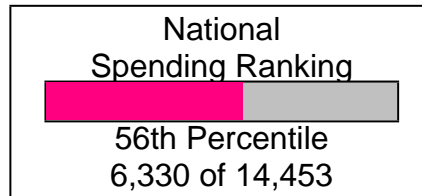
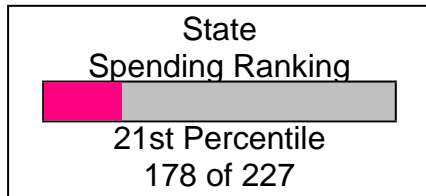
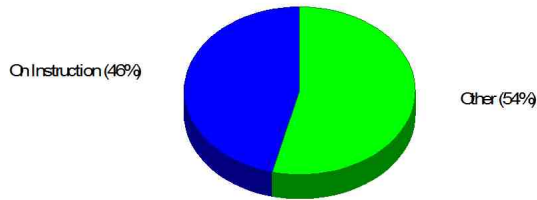


National Enrollment Ranking: 12,516 of 15,679 (20th Percentile)
State Enrollment Ranking: 159 of 230 (31st Percentile)

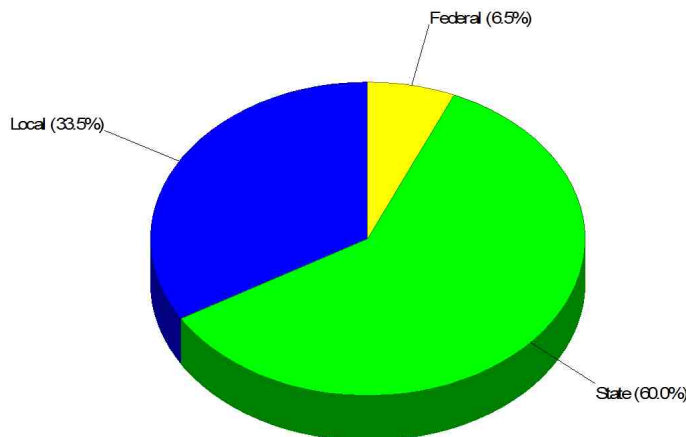
Prepared by Scott Christopher, REALTOR®

School Expenditures FOR PRINCETON SCHOOL DEPARTMENT

Expenditures Per Student
\$9,945



School Funding FOR PRINCETON SCHOOL DEPARTMENT



Scott Christopher, REALTOR®

Office: 207-947-7841

email: scott@sdchristopher.com

Web: www.sdchristopher.com

Public Schools for District

PRINCETON ELEMENTARY SCHOOL

289 MAIN STREET, PRINCETON, ME 04668

Distance from Subject: 1.8 Miles

Student/Teacher Ratio: 11.3 to 1

School Type:

Students/Teachers:

School Colors :

Regular

169/15

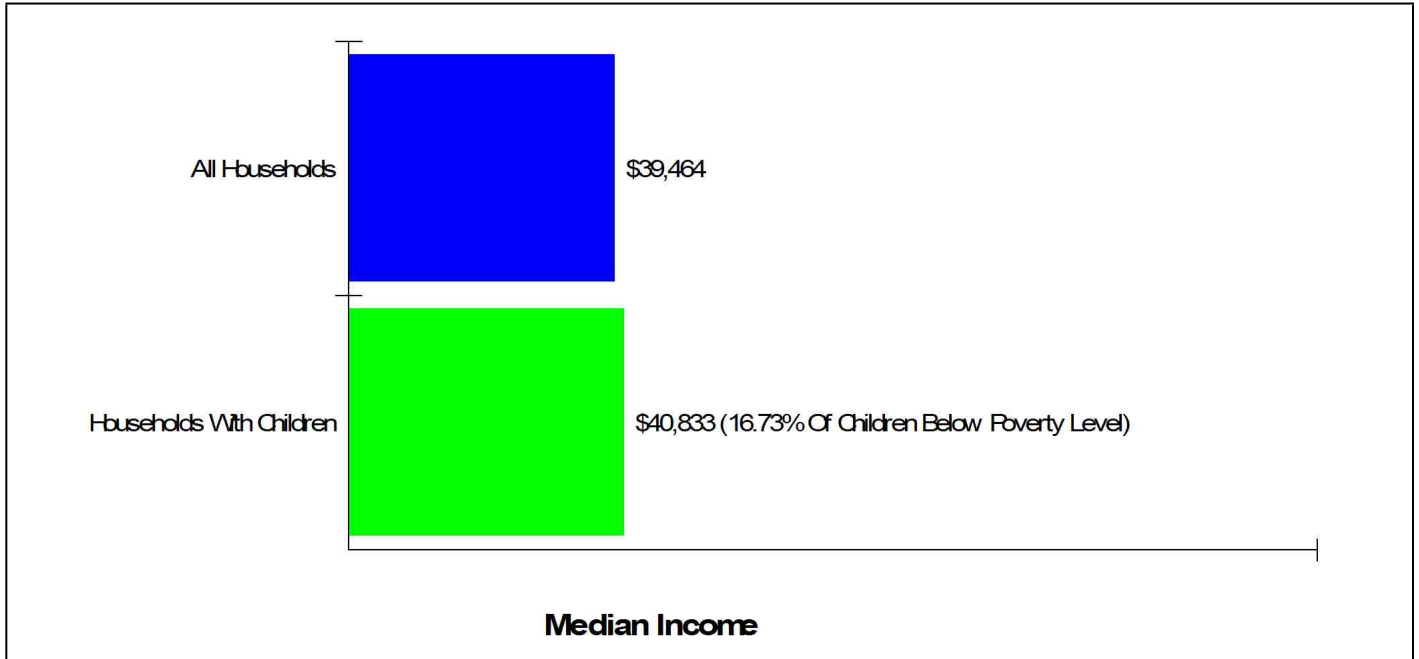
Purple & Gold

Phone: (207)796-2253

Grades: PK - 8

Prepared by Scott Christopher, REALTOR®

Income FOR PRINCETON SCHOOL DEPARTMENT



Parent Education Level FOR PRINCETON SCHOOL DEPARTMENT

